



Sierra Vista 509 Ranch


509+/- Acres
Bandera County

kw

KELLER WILLIAMS REALTY
LUXURY • FARM • RANCH

*M*agnificent panoramic views including those of nearby Medina Lake highlight your own private Hill Country Ranch.



A vibrant landscape featuring a stream flowing through a dense forest of green trees and bushes. In the foreground, a large field of purple flowers is in bloom. The sky is blue with scattered white clouds.

*S*panish, Live and Lacey Oaks, wild
cherries, cedar elms and mountain
laurels blanket the landscape.

*A*ccented by a winding seasonal creek with
sculpted bluffs.





*B*uild your dream house or a mountain cabin - the choices are limitless. Native whitetail deer and turkey also call this paradise home - so should you!

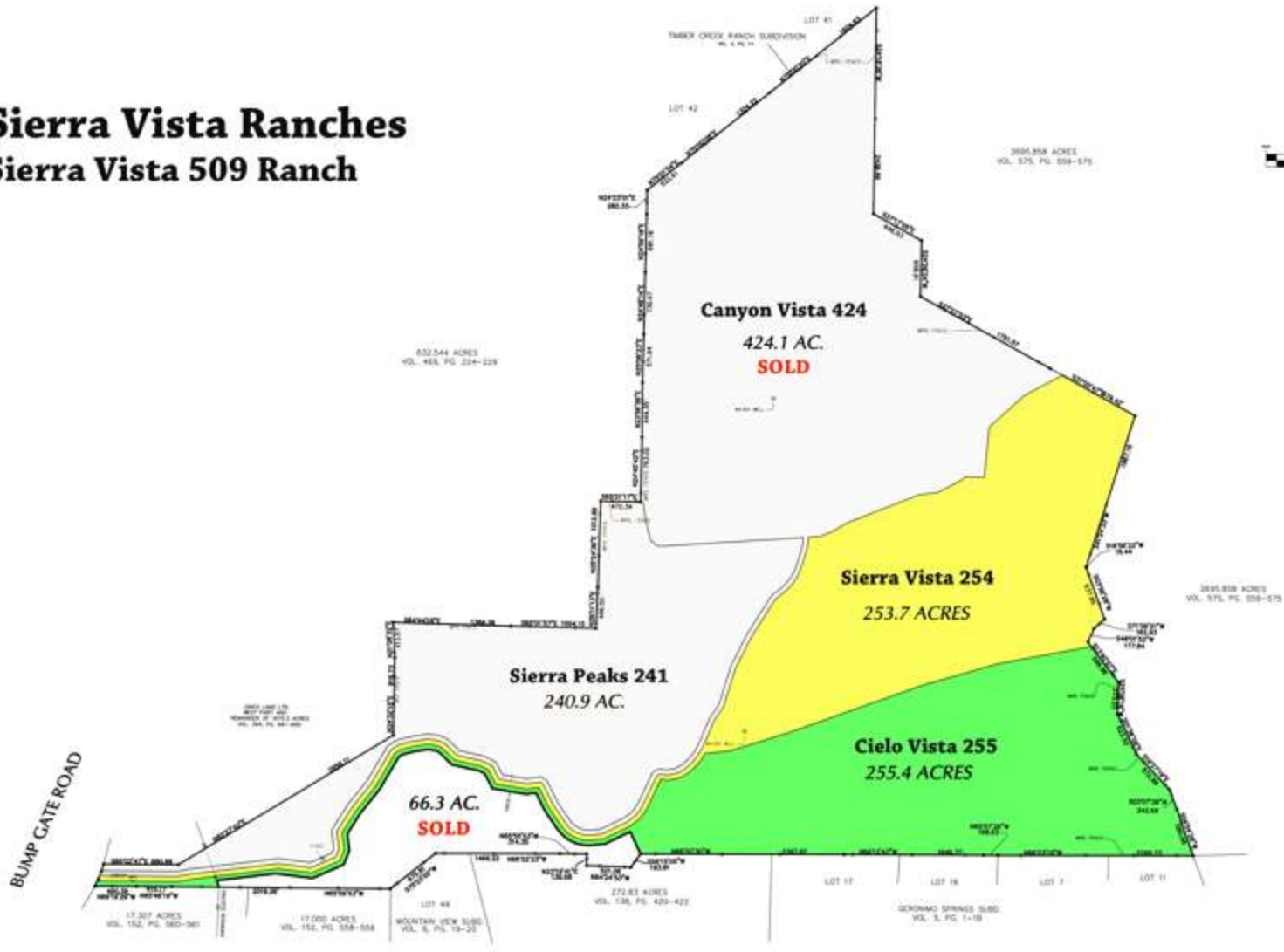
±509 Acres
Offered at \$2,250,000



WWW.WKSHUMPES.COM

Sierra Vista Ranches

Sierra Vista 509 Ranch



ACREAGE EXHIBIT		
SIERRA VISTA RANCH, BANDERA COUNTY, TEXAS		
	ALAMO CONSULTING ENGINEERING & SURVEYING, INC. 10000 JAMES SAN ANTONIO, TEXAS 78203	DATE: 6-8-2011 SCALE: 1" = 400' DRAWN BY: JC CHECKED BY: TE AEB NO. 12444
	140 HENRY BL. SUITE 817 SAN ANTONIO, TEXAS 78203	PHONE: (210) 884-0887 FAX: (210) 884-3000

Sierra Vista 509 Ranch

±509 Acres offered at \$2,250,000
(approximately \$4,420.43 per acre)

Taxes are approximately \$509 annually

Location is off Bump Gate Road near Medina Lake

30 minutes from San Antonio out Hwy 16

Bandera County, Texas



Keller Williams Luxury/Farm & Ranch

W. K. "Skip" Shumpes

312 River Road

Boerne, Texas 78006

Office: 830-816-6161

Cell: 210-415-6161

W.K.Shumpes@gmail.com

WWW.WKSHUMPES.COM



Property herein described is subject to prior sale, change or withdrawal without notice. The information herein given is deemed to be accurate and from reliable sources, however the Listing and/or Selling Broker's do not warrant such information and assume no responsibility thereof. Broker(s) do not warrant the value of this investment and Buyers are advised to make determination after consulting with business, legal and financial counselors. Buyers are advised that there is Oak Wilt and Oak Decline in Kendall and surrounding counties and will determine for themselves to what extent it may affect a property.