



Sierra Vista 254 Ranch

254+/- Acres
Bandera County

kw

KELLER WILLIAMS REALTY
LUXURY • FARM • RANCH

*M*agnificent panoramic views including those of nearby Medina Lake highlight your own private Hill Country Ranch.





*S*panish, Live and Lacey Oaks, wild cherries, cedar elms and mountain laurels blanket the landscape.

*A*ccented by a winding seasonal creek with
sculpted bluffs.





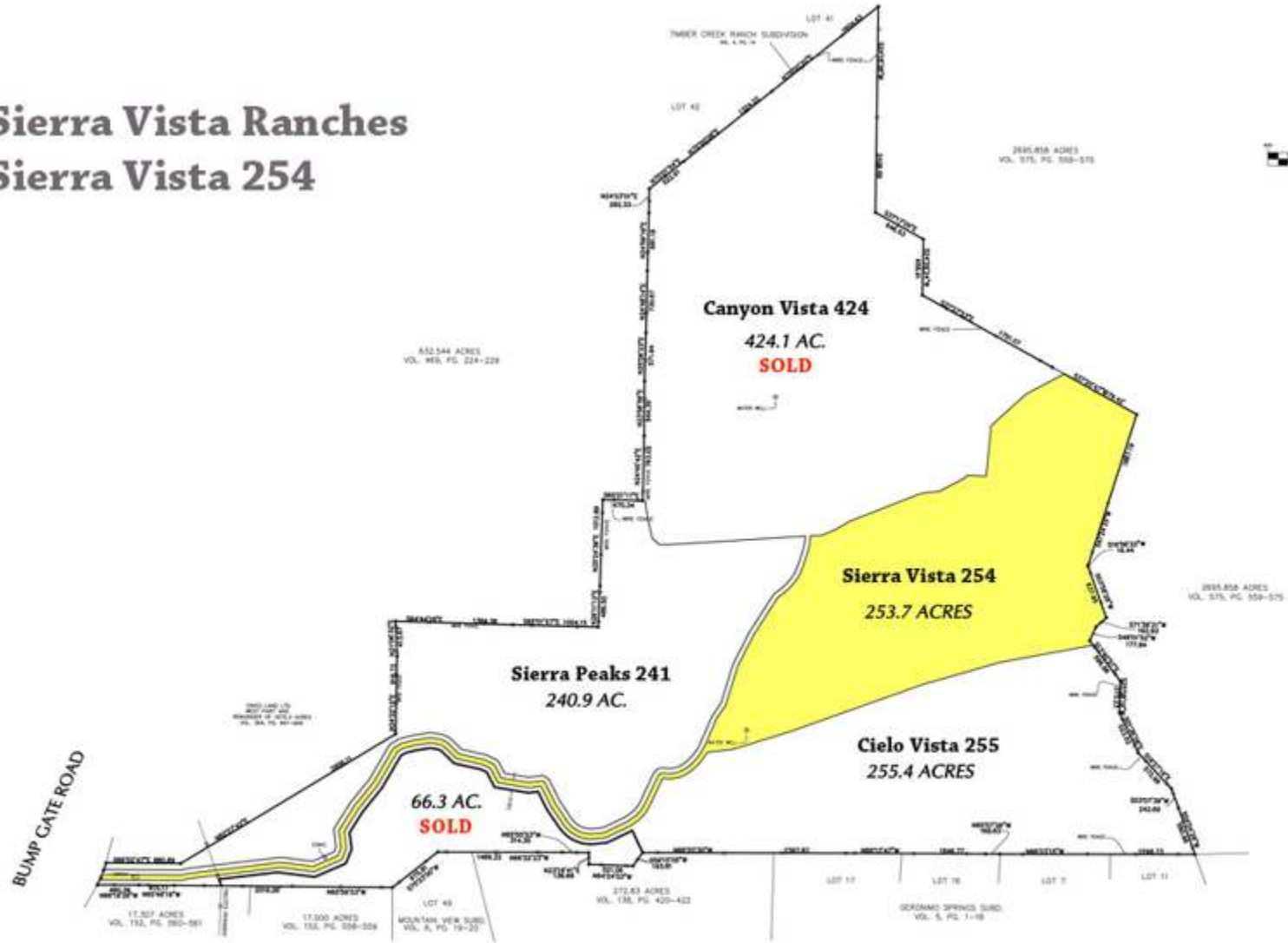
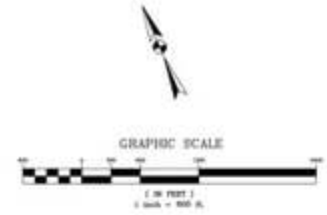
*B*uild your dream house or a mountain cabin - the choices are limitless. Native whitetail deer and turkey also call this paradise home - so should you!

254+/- Acres
Offered at \$1,125,000

WWW.FINETEXASRANCHES.COM

Sierra Vista Ranches

Sierra Vista 254



ACREAGE EXHIBIT		
SIERRA VISTA RANCH, BANDERA COUNTY, TEXAS		
	ALAMO CONSULTING ENGINEERING & SURVEYING, INC. 14770 JAYHAWK DRIVE SAN ANTONIO, TEXAS 78232	DATE: 9-9-2011 SCALE: 1" = 600' DRAWN BY: TC CHECKED BY: TC JOB NO: 12444
	WE HONOR ALL SIZES BY PHONE: (210) 899-0997 SAN ANTONIO, TEXAS 78232 FAX: (210) 899-0998	

WWW.FINETEXASRANCHES.COM

Sierra Vista 254 Ranch

254+/- Acres offered at \$1,125,000

(approximately \$4,429 per acre)

Taxes are approximately \$254 annually

Location is off Bump Gate Road near Medina Lake

30 minutes from San Antonio out Hwy 16

Bandera County, Texas



Keller Williams Luxury/Farm & Ranch

W. K. "Skip" Shumpes

312 River Road

Boerne, Texas 78006

Office: 830-816-6161

Cell: 210-415-6161

W.K.Shumpes@gmail.com

WWW.FINETEXASRANCHES.COM



Property herein described is subject to prior sale, change or withdrawal without notice. The information herein given is deemed to be accurate and from reliable sources, however the Listing and/or Selling Broker's do not warrant such information and assume no responsibility thereof. Broker(s) do not warrant the value of this investment and Buyers are advised to make determination after consulting with business, legal and financial counselors. Buyers are advised that there is Oak Wilt and Oak Decline in Kendall and surrounding counties and will determine for themselves to what extent it may affect a property.