



837 FM 289
Boerne, Texas

Smittyville

kw

KELLER WILLIAMS REALTY
LUXURY • FARM • RANCH



Smittyville

Incredible Commercial Real Estate for a multitude of uses - 20.81 acres on IH-10 frontage road with easy access both east and west bound with approximately 17,000 sf of retail, office and lodging accommodations in 11 separate buildings plus nearly 4500 sf of professionally designed greenhouses. Perfect location for RV Park, suburban campus-style office-retail development, spa, church retreat, or entertainment complex - less than 30 minutes to San Antonio. No zoning or city restrictions - Kendall County.

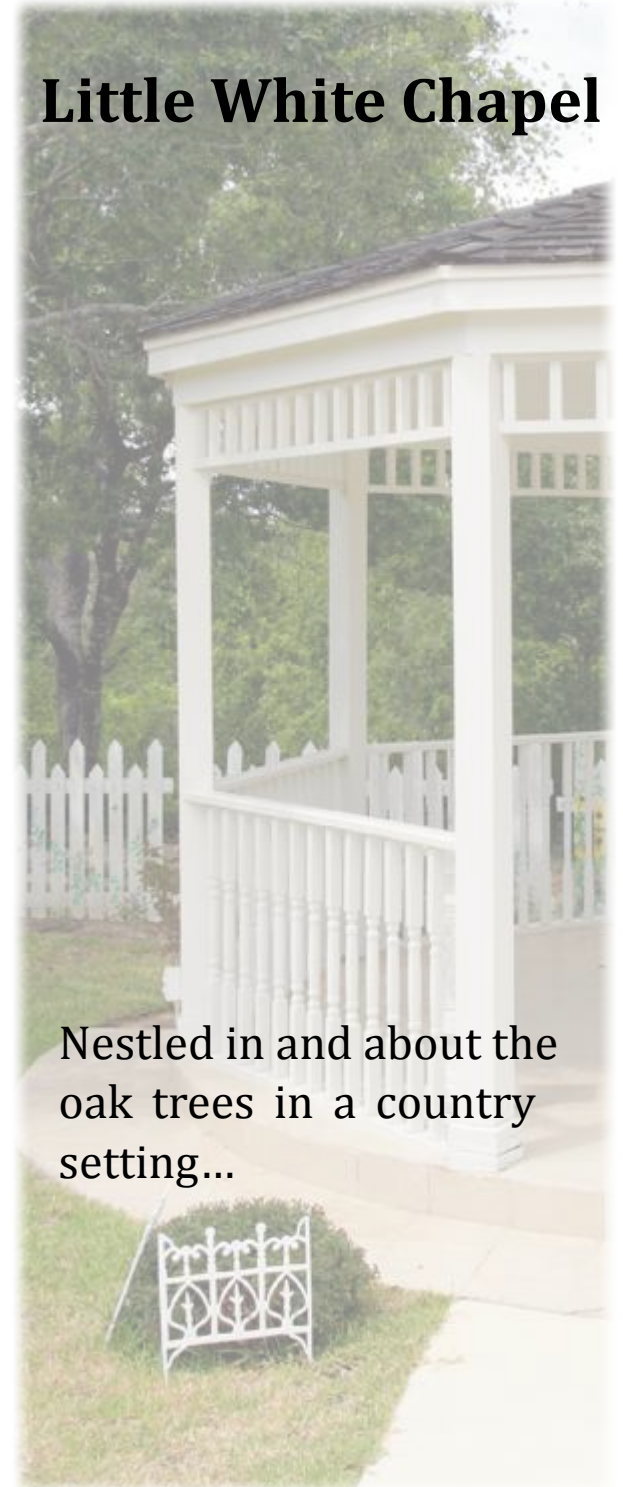


General Store





Little White Chapel



Nestled in and about the oak trees in a country setting...

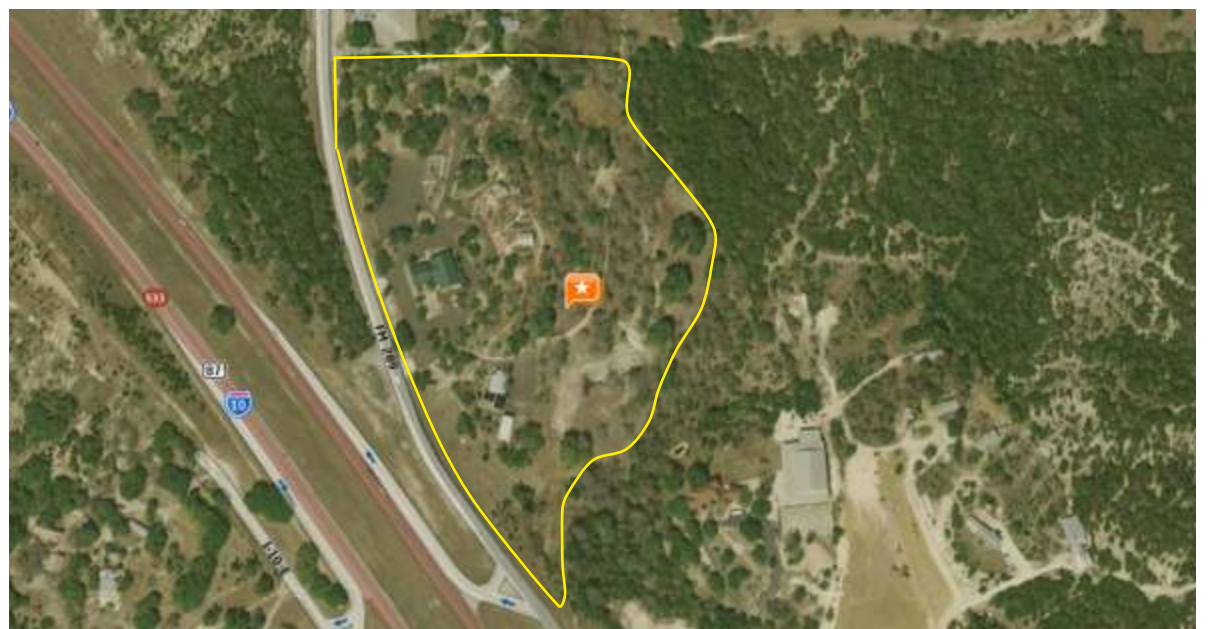
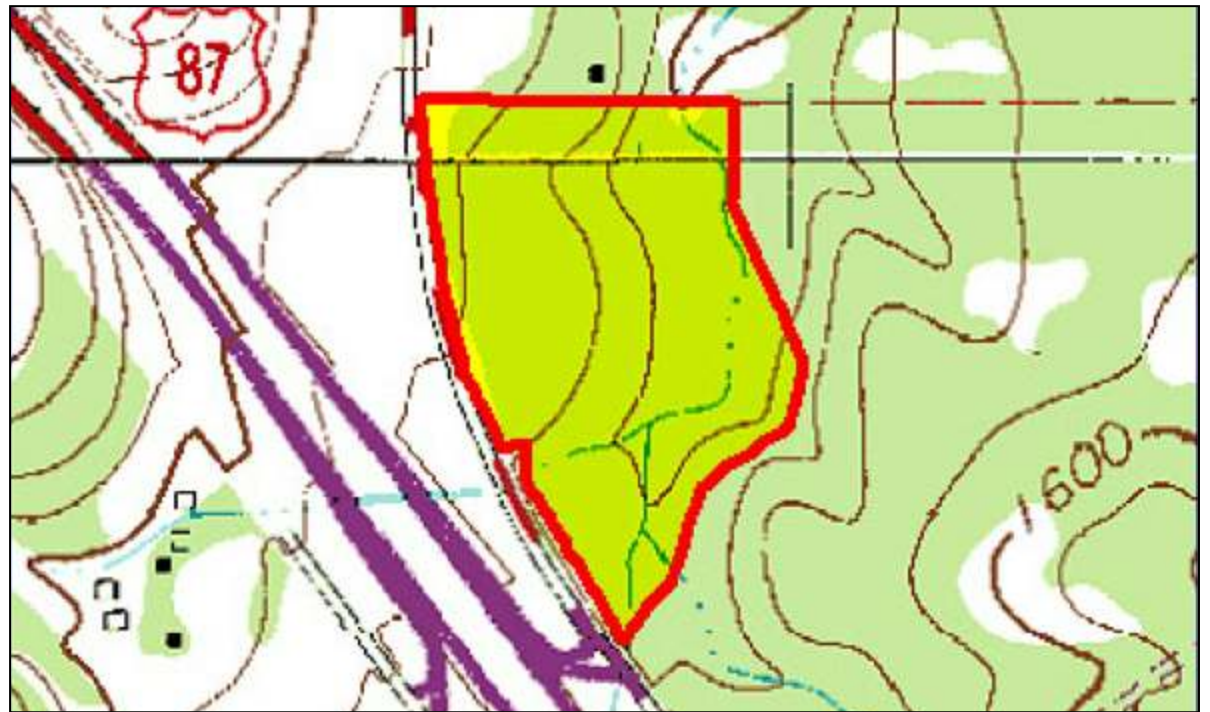


11 Separate Buildings





Offered at
\$3,950,000



WWW.FINETEXASRANCHES.COM

Smittyville

837 FM 289

Offered at \$3,950,000

MLS# _____

- Off IH-10W frontage road just north of Boerne - easy access both east and west
- 20.81+/- Acres
- No zoning or city restrictions
- Approximately 17,000 sf of retail, office and/lodging accommodations
 - Eleven separate buildings
 - Professionally designed greenhouse/butterfly house
 - Wedding Chapel and gazebo
 - Huge retail space building (currently General Store)
- Less than 30 minutes to San Antonio



Keller Williams Realty Luxury/Farm & Ranch

W. K. "Skip" Shumpes, Realtor®

312 River Road

Boerne, Texas 78006

Office: 830-816-6161

Cell: 210-415-6161

W.K.Shumpes@gmail.com

WWW.FINETEXASRANCHES.COM

